

Catalog #: 71152

Aliases

CREB1; CAMP Responsive Element Binding Protein 1; Cyclic AMP-Responsive Element-Binding Protein 1; CREB-1; Cyclic Adenosine 3',5'-Monophosphate Response Element-Binding Protein CREB; Cyclic Adenosine 3',5'-Monophosphate Response Element Binding Protein; CAMP-Responsive Element-Binding Protein 1; CAMP-Response Element-Binding Protein-1; Active Transcription Factor CREB; Transactivator Protein; CREB

Background

Gene Name: CREB1
NCBI Gene Entry: 1385
UniProt Entry: P16220

Application Information

Molecular Weight: Predicted, 35 kDa, observed, 43 kDa
Clonality: Mouse monoclonal antibody
Clone ID: 25GB565
Species Reactivity: Human, mouse, rat
Applications Tested: Western blotting (WB), immunocytochemistry (ICC)

Immunogen

Recombinant protein of human CREB

Isotype

Mouse IgG1

Storage Buffer

Supplied in PBS (pH 7.4) containing 50% glycerol, and 0.02% sodium azide.

Storage

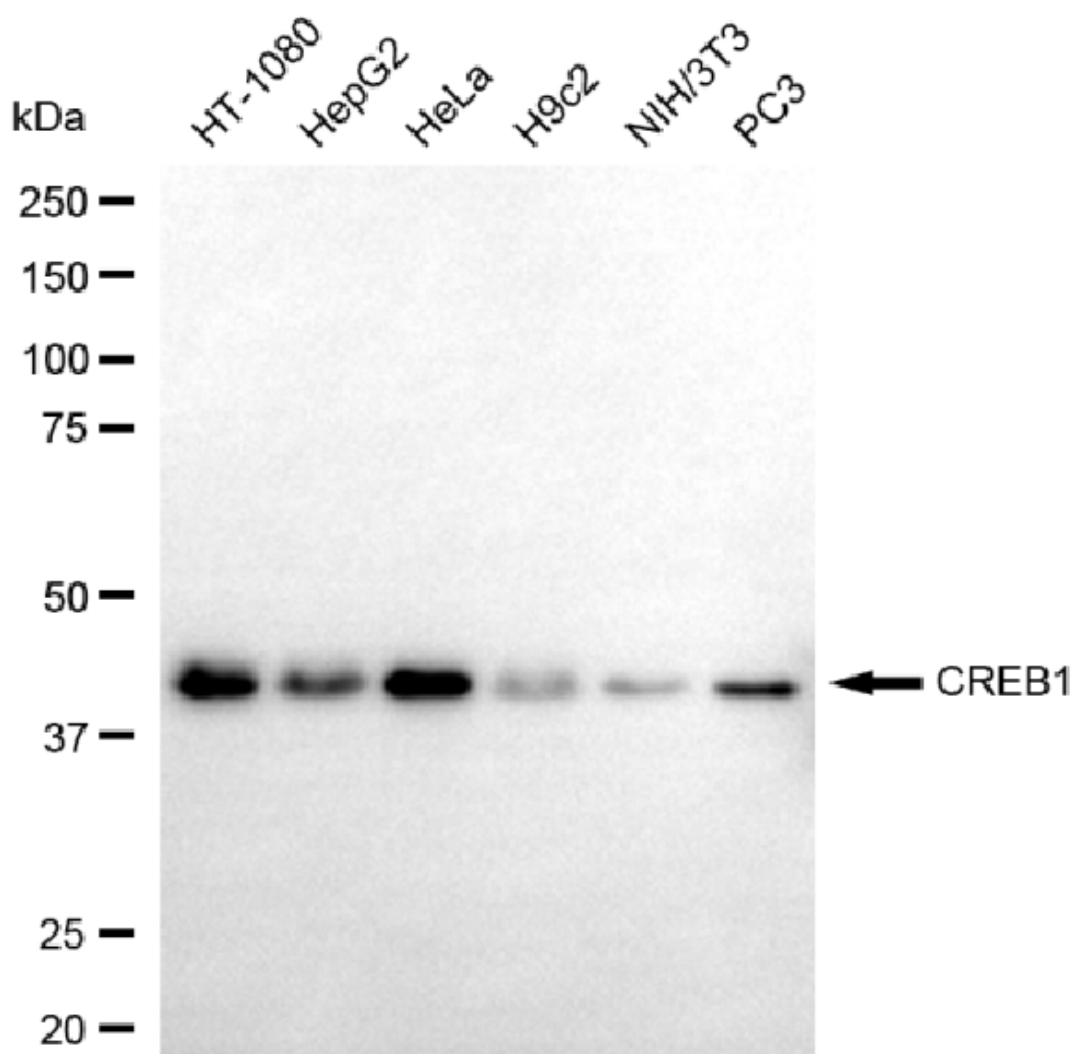
Store at -20 °C for one year.

Recommended Dilutions

Western Blotting (WB): 1:2,500-1:5,000
Immunocytochemistry (ICC): 1:100-1:1,000

Note: This product is for research use only.

Validation Data



Copyright ©2025 Genuin Biotechnologies LLC

Western blotting analysis using CREB1 antibody (Cat#71152). Total cell lysates (30 µg) from various cell lines were loaded and separated by SDS-PAGE. The blot was incubated with CREB1 antibody (Cat#71152, 1:5,000) and HRP-conjugated goat anti-mouse secondary antibody (Cat#101, 1:20,000) respectively. Image was developed using FeQ™ ECL Substrate Kit (Cat#226). CREB1, cAMP responsive element binding protein 1.

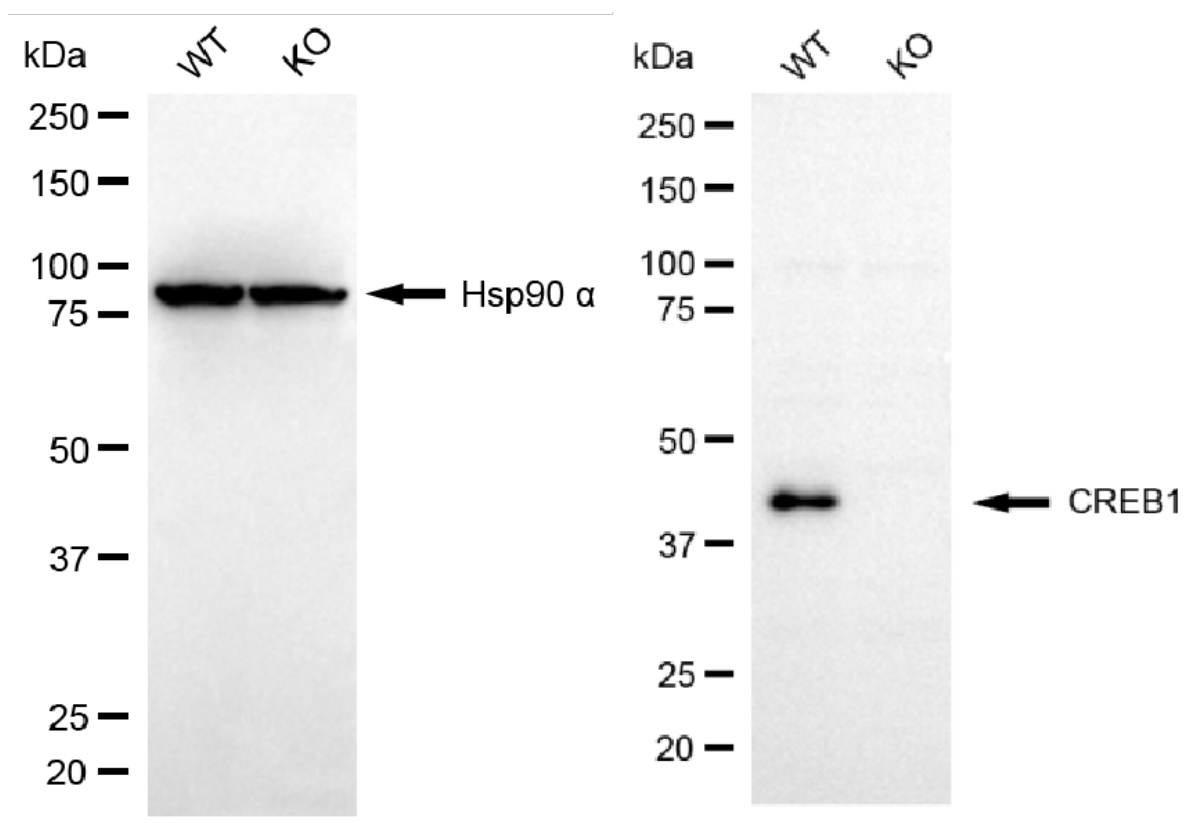
SUPPORT

SUPPORT@GENUINBIOTECH.COM
TEL: +1-540-855-7041

ORDERS

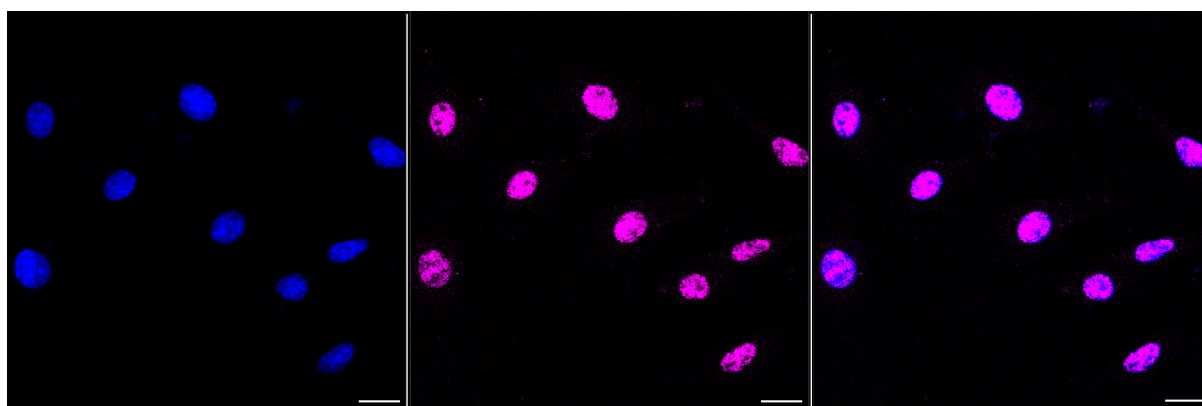
SALES@GENUINBIOTECH.COM
FAX: +1-540-855-7041

WWW.GENUINBIOTECH.COM



Copyright ©2025 Genuin Biotechnologies LLC

Western blotting analysis using CREB1 antibody (Cat#71152). CREB1 expression in wild type (WT) and CREB1 knockout (KO) 293T cells with 20 µg of total cell lysates. Hsp90 α serves as a loading control. The blot was incubated with CREB1 antibody (Cat#71152, 1:5,000) and HRP-conjugated goat anti-rabbit secondary antibody (Cat#201, 1:20,000) respectively. Image was developed using FeQ™ ECL Substrate Kit (Cat#226).



Copyright ©2025 Genuin Biotechnologies LLC

Immunocytochemical staining of C2C12 cells with CREB1 antibody (Cat#71152, 1:1,000). Nuclei were stained blue with DAPI; CREB1 was stained magenta with Alexa Fluor® 647. Images were taken using Leica stellaris 5. Protein abundance based on laser Intensity and smart gain: Medium. Scale bar, 20 µm.

SUPPORT

SUPPORT@GENUINBIOTECH.COM
TEL: +1-540-855-7041

ORDERS

SALES@GENUINBIOTECH.COM
FAX: +1-540-855-7041

WWW.GENUINBIOTECH.COM